

biostora

enhancing interiors, reducing environmental impact

*Interface*FLOR



a first for floors.

**if you could invent your ideal
carpet tile flooring, what
would it be?**

We assume you would want it to be resilient and durable in a variety of settings. In colours that coordinate well with other furnishings. And it must be easy to install, giving you flexible design options for wall-to-wall coverage and feature areas.

Most importantly, you're likely to be concerned about its environmental impact. So you'll want it to use recycled

yarn and backing – and better still, to use less yarn, yet achieving the same performance. And how about flooring that needs no glue, has less of an effect on indoor air quality?

If you're looking for flooring that does all this – like no other product currently available – you'll want to know more about Biosfera I.

more choice, less environmental impact.

With Biosfera I from InterfaceFLOR, you have the choice of three high-performance tufted carpets: Bouclé, Velour and Micro. To minimise their effect on the environment, we use 100% recycled yarn, as well as recycled materials in the backing. And then we reduce the impact yet further, by using an incredibly low amount of yarn, without compromising performance.

Why less yarn?

The answer's simple: the processing of the yarn in a standard carpet tile can cause up to 50% of its total environmental impact.

Since 2000, we have used life cycle assessment (LCA) to assess the impact of our products, and we address all materials and aspects throughout their life cycle. By using only recycled yarn in Biosfera I, and as little of it as possible, we are tackling the single largest contributor to environmental impact among all the raw materials in a carpet tile.

Does less yarn mean lower quality?

No. In fact, we've found that a low-weight, well-constructed dense surface can be just as hardwearing as one with a high yarn weight.

A typical carpet tile contains around 700 grams of yarn per square metre. But we've reduced that significantly in three well-known and tested constructions: Bouclé,


a loop pile which contains only 530 grams; Velour, a cut pile which uses only 610 grams; and Micro, made with our unique manufacturing process, which has less than half the standard content, at 350 grams.

Our innovative Microtuft construction is a prime example of the 'less is more' philosophy. Microtuft bridges the gap between a hard floor and a carpet, offering better acoustics than traditional hard-floor surfaces, with appeal to those who wouldn't usually choose a traditional carpet.

More about our recycled yarn

The yarn we are using has been independently verified through 3rd party auditors so we know the yarn is 100% recycled of which 30% is post-consumer recycled raw material from a variety of sources including old fishing nets; the remainder is pre-consumer recycled raw material from external sources including production and manufacturing waste, therefore reducing the amount of waste in the supply chain.

So, Biosfera I uses less raw material overall than other products, contributes to InterfaceFLOR's Mission Zero goals by using less virgin raw material through influencing the supply chain, and gives you a product which helps to reduce environmental and social impacts.



“biosfera I contains 100% recycled yarn, and as little of it as possible.”



“TacTiles™ glue-less installation virtually eliminates emissions, helping to maintain good indoor air quality.”

Micro - 7171 Carrara, 7172 Jura & 7173 Valdeorras

taking sustainability further.

As well as using less yarn – 100% recycled – plus recycled backing materials, Biosfera I reduces environmental impact in two more ways.

Glue-free installation – with TacTiles™

All Biosfera I carpet tiles are offered with TacTiles™ as a standard installation system, which means you don't need to use traditional adhesives. We developed this patented system because we knew we could do more than just reduce the environmental impacts of the actual carpet tile.

Using TacTiles™ reduces the environmental impact by about 90% when compared to traditional adhesive. Emissions from the adhesive, which are typically higher than that from the actual carpet, are virtually eliminated. Therefore virtually no volatile organic compounds (VOCs) are released which helps to maintain good indoor air quality.

Biosfera I can contribute positively to all major green building certification schemes. TacTiles™ can help gain further credits through these schemes, by lowering levels of VOCs.

TacTiles™ also make the actual installation easier, cleaner and saves cost of equipment. The carpet

can be walked on as soon as the tiles are installed, so it's back to 'business as usual' straight away. The installation can be carried out during working hours, therefore business dynamics aren't disturbed. They are also easy to lift for repairs or repositioning, again saving costs throughout their life.




a better floor, in so many ways.

Offsetting carbon emissions – with Cool Carpet®

Biosfera I is part of our Cool Carpet® programme, where we measure the greenhouse gases emitted throughout the life of a carpet, then work with partner organisations to purchase verified carbon offsets that neutralise these emissions. This means calculating the CO₂ emissions not just from the manufacturing process, but also from raw materials, use and maintenance, and final disposal.

The Cool Carpet® programme is verified by SGS, a world-leading company in inspection, verification, testing and certification. It assesses the methods we use to calculate greenhouse gas emissions, and confirms these are offset through verified emission reduction credits.



**“we measure the
greenhouse gases
emitted throughout
the life of a carpet,
then purchase verified
carbon offsets that
neutralise them.”**

“you can trust biosfera I carpet to retain its appearance in virtually any commercial setting.”

more reasons to choose biosfera I.

Not only is Biosfera I a wise environmental choice, it also offers a range of other important benefits.

Resilience and longevity

Wherever a Biosfera I carpet is installed, you can trust it to retain its appearance. Its resilient tufted constructions ensure it withstands heavy use, and its high castor chair rating means it performs well in even the busiest offices plus virtually any other commercial setting.

Coordinating colours

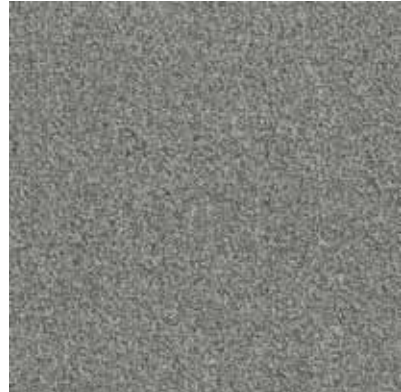
Most business interiors need flooring in neutral colours to complement furniture and fittings whilst creating a professional atmosphere. We have developed

coordinating grey tones for the Biosfera I collection, helping it achieve an overall ‘architectural look’ for most commercial environments.

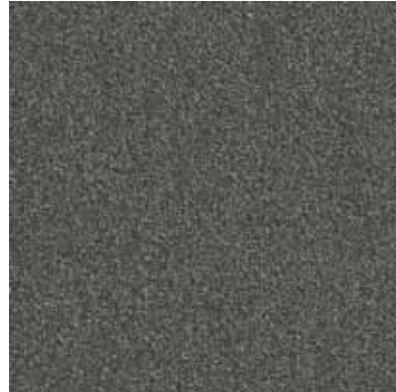
Installation options

Within the Biosfera I range, Bouclé and Velour are suitable for monolithic installation, giving you a seamless, wall-to-wall effect. They also let you create feature areas as part of a specific floor design.

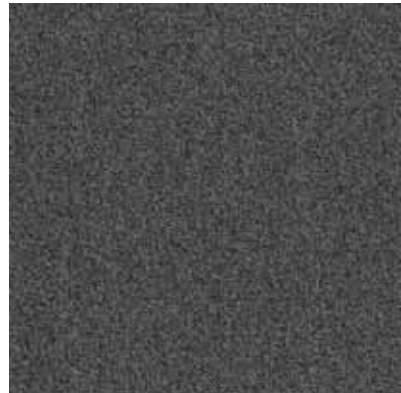
bouclé



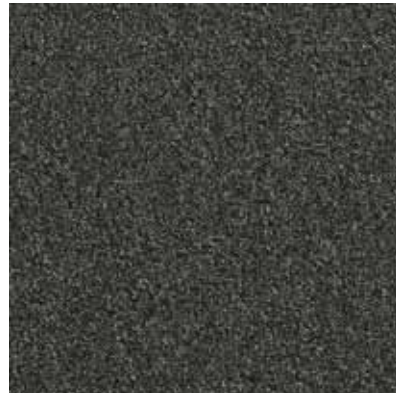
7181 Bianco Christal



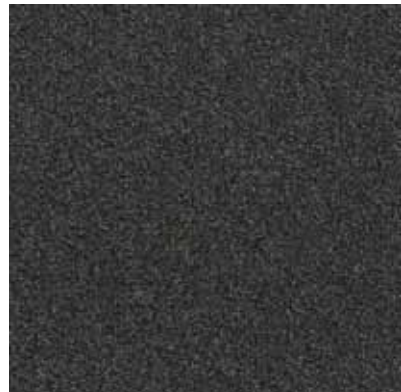
7182 Bardiglio



7183 Mundo



7184 Polaris



7185 Nero Ebano



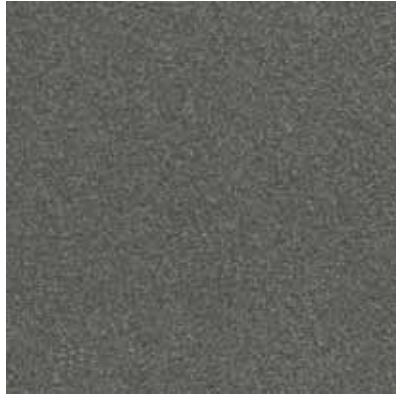
7186 Nero Impala



velour



7191 Bianco Christal



7192 Bardiglio



7194 Polaris



micro



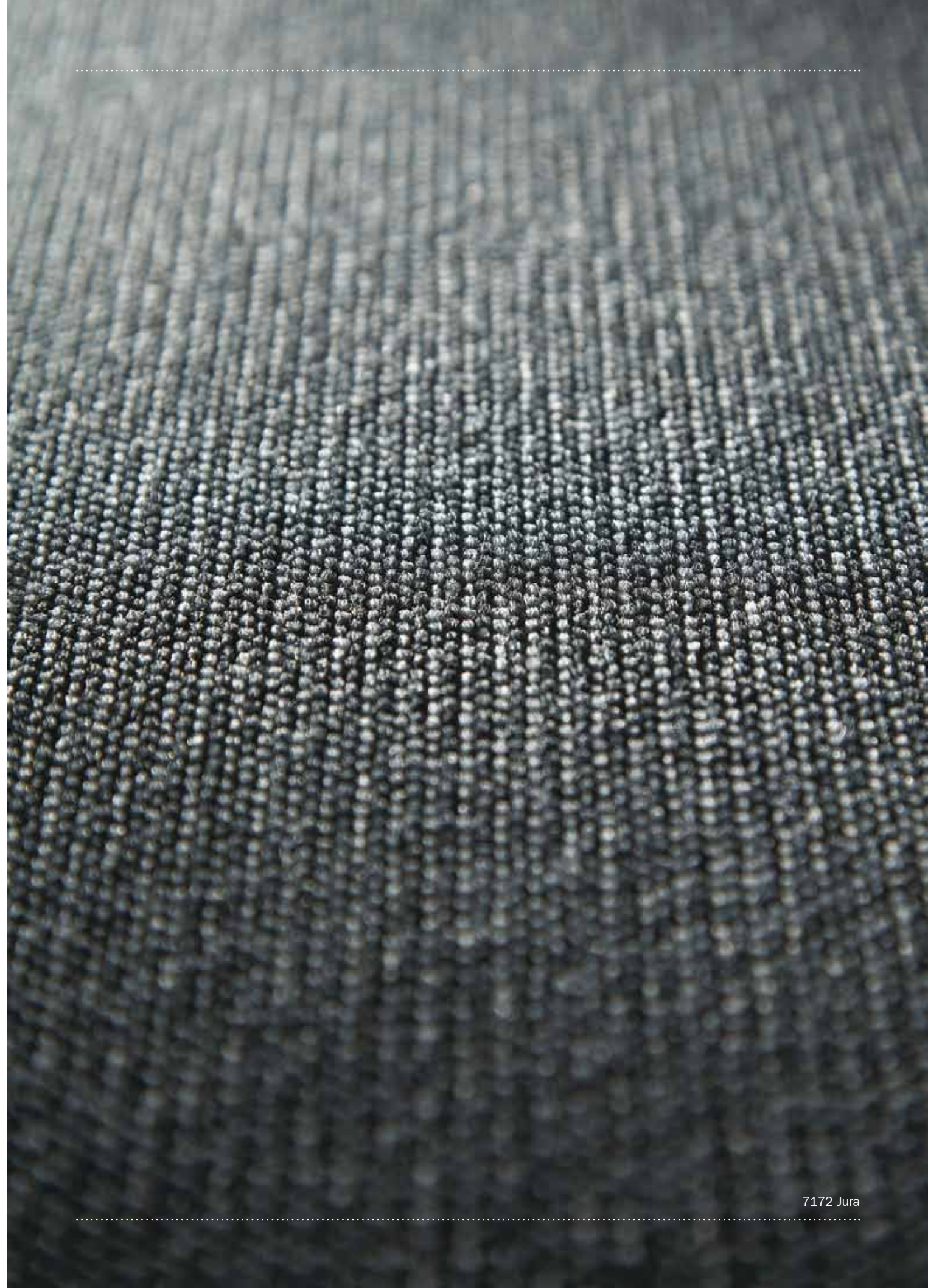
7171 Carrara



7172 Jura



7173 Valdeorras



7172 Jura

Biosfera I

Bouclé

Product Definition	Tufted Plain Level Loop Tile
Pile Material	100% recycled BCF solution dyed nylon PA 6, containing post and pre consumer recycled content
Pile Yarn Weight	530g/m ² ± 5%
Total Weight	4300g/m ² ± 5%
Total Thickness	5.8 ± 0.3 mm
Gauge/Ends 10 cm	1/10 - 41
Tufts per m²	164,000 ± 5%
Backing Type	Graphlex®
Base Style Number	60718

Wear Classification	Heavy Contract (EN 1307 - Class 33)												
Radiant Panel	(EN ISO 9239/1) Euroclass Cfl s1 (EN ISO 13501)												
Hot Metal Nut	Pass, low radius of effects of ignition (BS 4790)												
Castor Chair Rating	≥ 2,4 (EN 985)												
Dimensional Stability	≤ 0,2% (ISO 2551/EN 986)												
Vertical Electrical Resistance	5 x 10 ⁹ Ω >< 2 x 10 ¹⁰ Ω (IBM) Computerguard												
Colour Fastness – Light	≥ 6-7 (ISO 105/B02)												
Tiles per Box	20 - 5m ² (50 x 50 cm ± 0.2%)												
Sound Absorption	<table border="1"> <thead> <tr> <th>125Hz</th> <th>250Hz</th> <th>500Hz</th> <th>1000Hz</th> <th>2000Hz</th> <th>4000Hz</th> </tr> </thead> <tbody> <tr> <td>0.01</td> <td>0.02</td> <td>0.05</td> <td>0.13</td> <td>0.24</td> <td>0.27</td> </tr> </tbody> </table>	125Hz	250Hz	500Hz	1000Hz	2000Hz	4000Hz	0.01	0.02	0.05	0.13	0.24	0.27
125Hz	250Hz	500Hz	1000Hz	2000Hz	4000Hz								
0.01	0.02	0.05	0.13	0.24	0.27								

Recycled Content	56.6% pre and post-consumer recycled content out of total weight 100% pre- and post-consumer recycled content in the yarn 66.5% pre-consumer recycled content in the backing
Cool Carpet®	Third-party verified carbon neutral throughout full life cycle
TacTiles™	Free TacTiles™ included with purchase for glue-free installation
Indoor Air Quality	GUT certificate applied for Compliant to the requirements of CRI Green Label Plus
Green Building Certification	Potential direct or indirect contribution to several credits / points for all major green building schemes including LEED, BREEAM, DGNB and HQE

Light Value*		L	Y
	7181 Bianco Christal	50.38	18.74
	7182 Bardiglio	38.69	10.49
	7183 Mundo	32.62	7.37
	7184 Polaris	32.06	7.11
	7185 Nero Ebano	24.32	4.2
	7186 Nero Impala	20.11	3.02

* L Value = L according to CIE L*a*b* colour space, Y Value = Light Reflectance Value according to BS 8493

Interface Europe Ltd reserve the right to change or modify specifications

Biosfera I

Velour

Product Definition	Tufted Plain Level Cut Tile
Pile Material	100% recycled BCF solution dyed nylon PA 6, containing post and pre consumer recycled content
Pile Yarn Weight	610g/m ² ± 5%
Total Weight	4400g/m ² ± 5%
Total Thickness	5.3 ± 0.3 mm
Gauge/Ends 10 cm	5/64 - 51
Tufts per m²	209,100 ± 5%
Backing Type	Graphlex®
Base Style Number	60719

Wear Classification	Heavy Contract (EN 1307 - Class 33)												
Radiant Panel	(EN ISO 9239/1) Euroclass Cfl s1 (EN ISO 13501)												
Hot Metal Nut	Pass, low radius of effects of ignition (BS 4790)												
Castor Chair Rating	≥ 2,4 (EN 985)												
Dimensional Stability	≤ 0,2% (ISO 2551/EN 986)												
Vertical Electrical Resistance	5 x 10 ⁹ Ω >< 2 x 10 ¹⁰ Ω (IBM) Computerguard												
Colour Fastness – Light	≥ 5-6 (ISO 105/B02)												
Tiles per Box	20 - 5m ² (50 x 50 cm ± 0.2%)												
Sound Absorption	<table border="1"> <thead> <tr> <th>125Hz</th> <th>250Hz</th> <th>500Hz</th> <th>1000Hz</th> <th>2000Hz</th> <th>4000Hz</th> </tr> </thead> <tbody> <tr> <td>0.01</td> <td>0.04</td> <td>0.07</td> <td>0.17</td> <td>0.24</td> <td>0.30</td> </tr> </tbody> </table>	125Hz	250Hz	500Hz	1000Hz	2000Hz	4000Hz	0.01	0.04	0.07	0.17	0.24	0.30
125Hz	250Hz	500Hz	1000Hz	2000Hz	4000Hz								
0.01	0.04	0.07	0.17	0.24	0.30								

Recycled Content	56.9% pre and post-consumer recycled content out of total weight 100% pre- and post-consumer recycled content in the yarn 66.5% pre-consumer recycled content in the backing
Cool Carpet®	Third-party verified carbon neutral throughout full life cycle
TacTiles™	Free TacTiles™ included with purchase for glue-free installation
Indoor Air Quality	GUT certificate applied for Compliant to the requirements of CRI Green Label Plus
Green Building Certification	Potential direct or indirect contribution to several credits / points for all major green building schemes including LEED, BREEAM, DGNB and HQE

Light Value*		L	Y
	7191 Bianco Christal	48.52	17.21
	7192 Bardiglio	36.46	9.25
	7194 Polaris	28.22	5.54

* L Value = L according to CIE L*a*b* colour space, Y Value = Light Reflectance Value according to BS 8493

Interface Europe Ltd reserve the right to change or modify specifications

Biosfera I

Micro

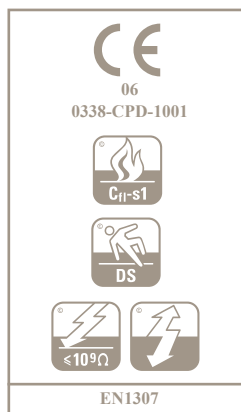
Product Definition	Microtuft Patterned Level Loop Tile
Pile Material	100% recycled BCF solution dyed nylon PA 6, containing post and pre consumer recycled content
Pile Yarn Weight	350g/m ² ± 5%
Total Weight	4150g/m ² ± 5%
Total Thickness	4.8 ± 0.3 mm
Gauge/Ends 10 cm	5/64 - 51
Tufts per m²	193,800 ± 5%
Backing Type	Graphlex®
Base Style Number	60717

Wear Classification	Heavy Contract (EN 1307 - Class 33)												
Radiant Panel	(EN ISO 9239/1) Euroclass Cfl s1 (EN ISO 13501)												
Hot Metal Nut	Pass, low radius of effects of ignition (BS 4790)												
Castor Chair Rating	≥ 2,4 (EN 985)												
Dimensional Stability	≤ 0,2% (ISO 2551/EN 986)												
Vertical Electrical Resistance	5 x 10 ⁵ Ω >> 2 x 10 ¹⁰ Ω (IBM) Computerguard												
Colour Fastness – Light	≥ 7 (ISO 105/B02)												
Tiles per Box	20 - 5m ² (50 x 50 cm ± 0.2%)												
Sound Absorption	<table border="1"> <thead> <tr> <th>125Hz</th> <th>250Hz</th> <th>500Hz</th> <th>1000Hz</th> <th>2000Hz</th> <th>4000Hz</th> </tr> </thead> <tbody> <tr> <td>0.02</td> <td>0.01</td> <td>0.02</td> <td>0.14</td> <td>0.20</td> <td>0.25</td> </tr> </tbody> </table>	125Hz	250Hz	500Hz	1000Hz	2000Hz	4000Hz	0.02	0.01	0.02	0.14	0.20	0.25
125Hz	250Hz	500Hz	1000Hz	2000Hz	4000Hz								
0.02	0.01	0.02	0.14	0.20	0.25								

Recycled Content	53.2% pre and post-consumer recycled content out of total weight 100% pre- and post-consumer recycled content in the yarn 66.4% pre-consumer recycled content in the backing
Cool Carpet®	Third-party verified carbon neutral throughout full life cycle
TacTiles™	Free TacTiles™ included with purchase for glue-free installation
Indoor Air Quality	GUT certificate applied for Compliant to the requirements of CRI Green Label Plus
Green Building Certification	Potential direct or indirect contribution to several credits / points for all major green building schemes including LEED, BREEAM, DGNB and HQE

Light Value*		L	Y
	7171 Carrara	48.51	17.20
	7172 Jura	43.86	13.74
	7173 Valdeorras	29.15	5.90

* L Value = L according to CIE L*a*b* colour space, Y Value = Light Reflectance Value according to BS 8493



Interface Europe Ltd reserve the right to change or modify specifications